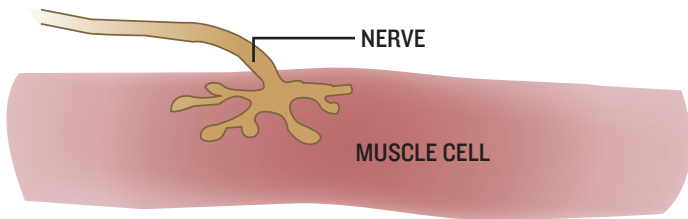


Myasthenia Gravis

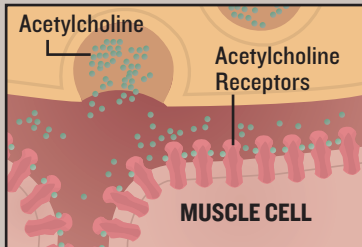
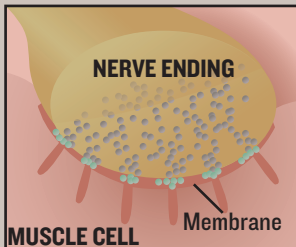
Myasthenia gravis is a chronic autoimmune neuromuscular disease that causes weakness in the skeletal muscles of the body. The disease occurs when the transmission of nerve impulses to the muscle are interrupted at the neuromuscular junction, where nerves connect with the muscle they control.

Effects on the body

- Weakness in eyelid muscles and eyes, causing double vision
- Speech impaired
- Thymus often removed because doctors think it could cause MG
- Jaw tires easily
- Difficulty swallowing
- Respiratory problems. Hospitalization and assisted ventilation can be required
- Severe weakness in arms and legs
- Hand and finger muscles are often affected

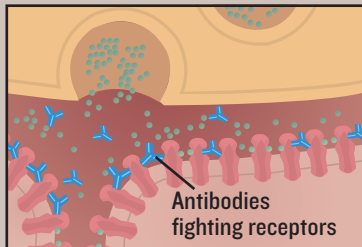
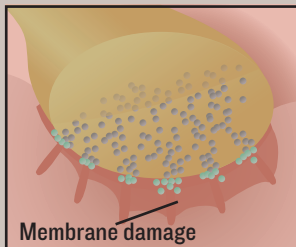


NORMAL NEUROMUSCULAR JUNCTION



When impulses are normally transmitted, the nerve endings release a neurotransmitter substance called acetylcholine that binds to acetylcholine receptors and generates a muscle contraction.

MYASTHENIA GRAVIS



In myasthenia gravis, the immune system mistakenly attacks itself. Antibodies block, alter or destroy the receptors for acetylcholine, which prevents the muscle contraction from occurring.